

## Pharmaceutical Managers Institute of Ireland

# The Irish Health Service – 2017 Developments and Plans

# **hello** my name is...

**Tony O'Brien**

Director General of the Health Service

09-02-2017

# 2016 – What We Delivered

2017

National Service Plan

1.7m

Hospital Discharges

3.34m

OPD attendances

478,500

GP Visit Cards

27,000

No. of CIT contacts

1.7m

People with a medical card

1.5m

No. of patients seen for therapy in primary care

309,500

Ambulance Emergency Responses

23,100

Older people in residential settings

10.57m

Home Help Hours delivered to 49,000 older people

8,170

People with disabilities provided with a residential place

1.5m

PA hours provided to adults with a physical and / or sensory disability

28,875

Adults seen by the mental health services

17,790

Children seen by CAMHs services

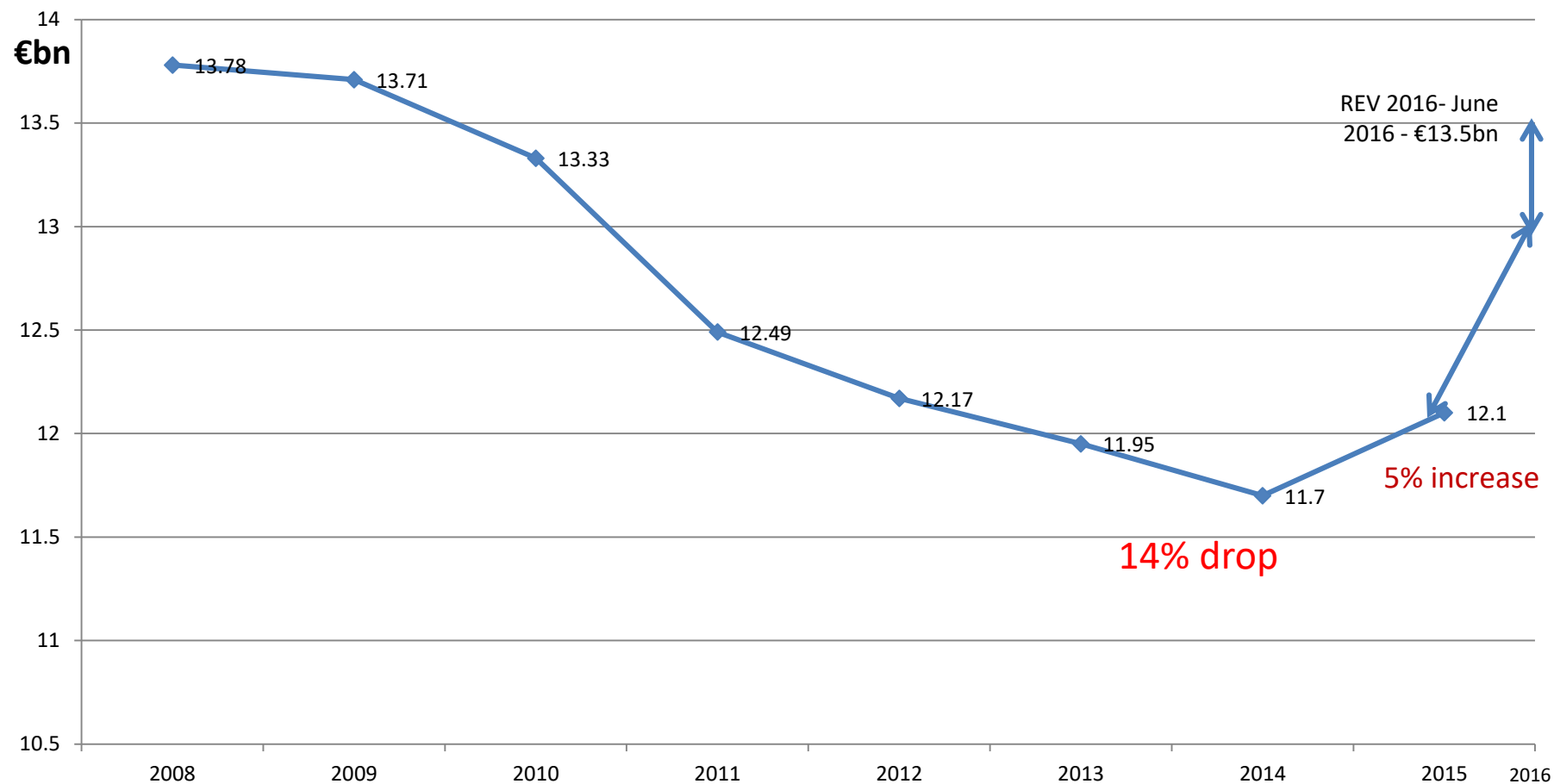
# 'Keeping Ireland Alive'



Source: HSE Annual Report 2015

# Health Spending

## Government Net Funding to HSE



**Source:** HSE monthly performance reports. Available at:

<http://www.hse.ie/eng/services/Publications/corporate/performance/Reports/MonthlyPRs.html>

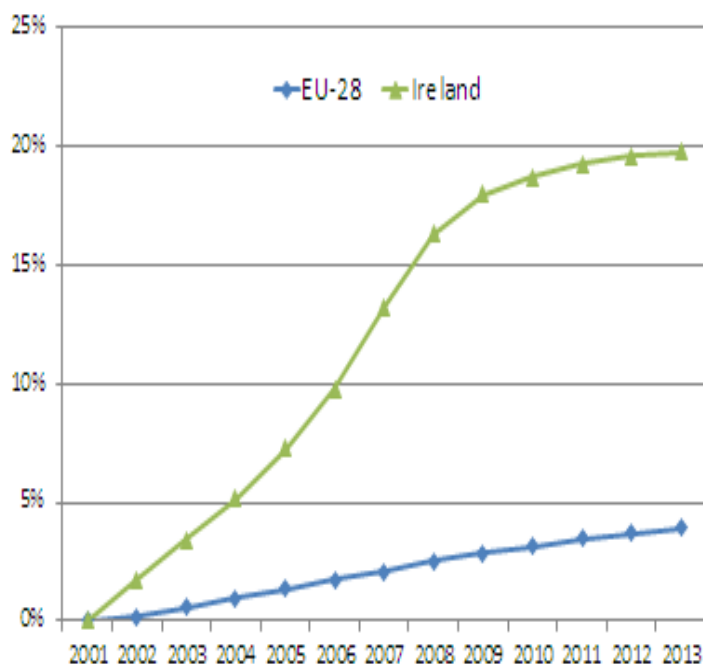
**Note:** All figures presented are net of income charges

# Budget 2017

- Total revenue budget available in 2017 is **€13,948.5m**
- Increase on revised budget 2016 of **€458.6m (3.4%)**
- Full year effects of 2016 developments - €72.9m
- Pay rate funding to support existing level of staff - €118.1m
- Non-pay and demographics costs - €186.3m
- Expanding existing & developing new services - €81.3m
- Within the €13,948.5m, **€36.5m** is being held by the DoH to fund specific initiatives
- Separately, a provision of €439m in capital funding will be made available to the HSE in 2017, comprising €384m for building, equipping and furnishing of health facilities and €55m for ICT.

# Demographic Backdrop

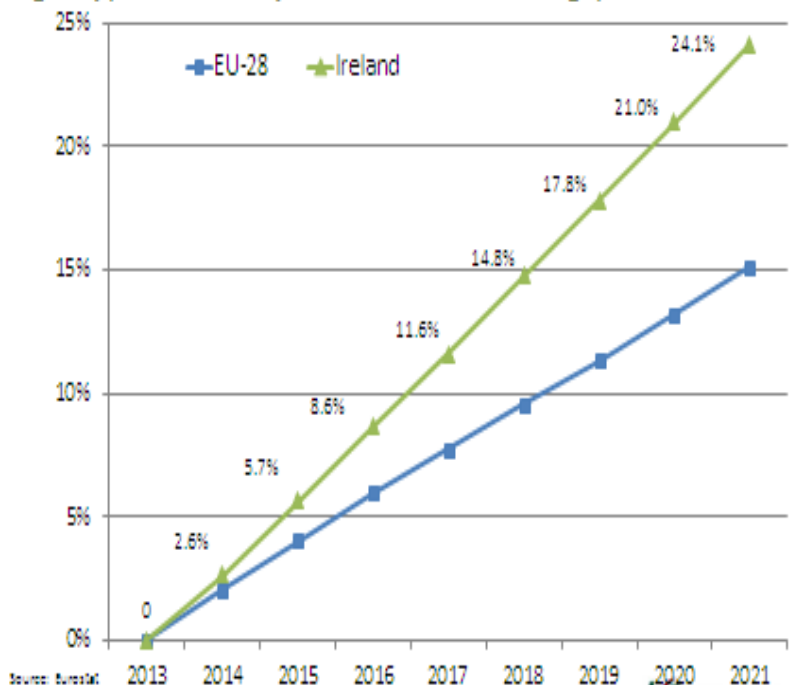
## Percentage population growth since 2001: Ireland compared with EU average



Source: Eurostat

## Older Population

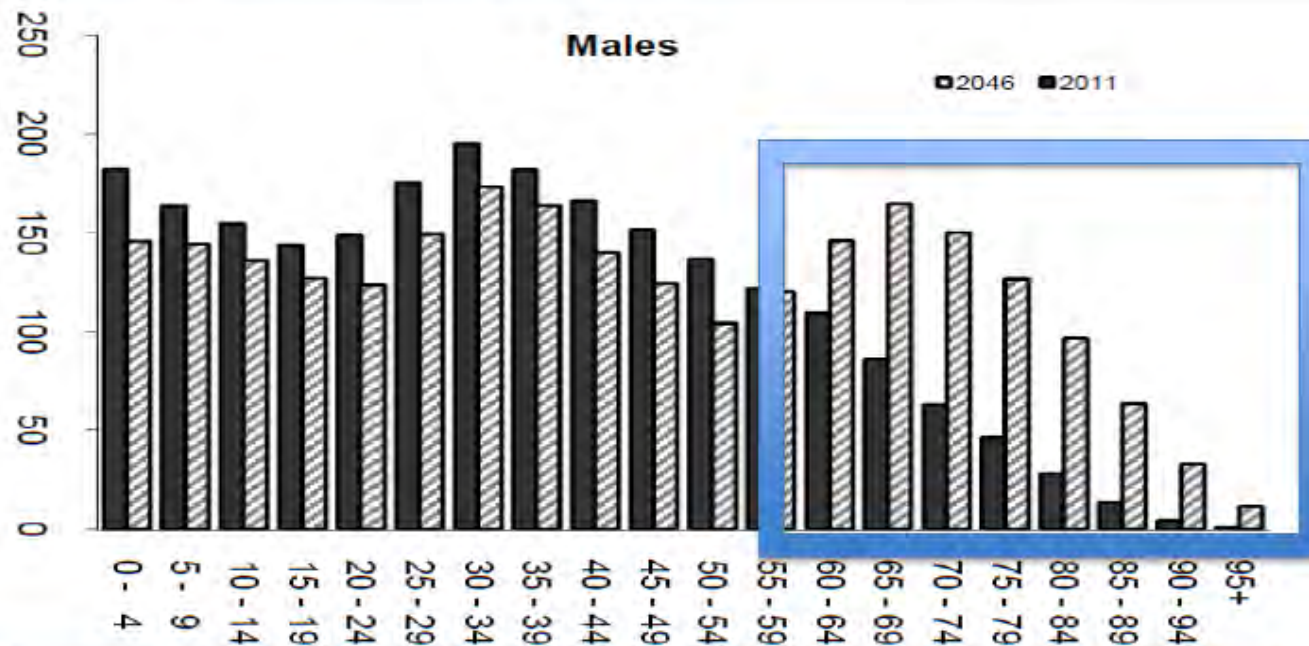
### Projected population growth in the 65 years and older age group, Ireland compared with EU-28 average, 2013 to 2021



Source: Eurostat

# Pension Crisis

## Part I - Demographics



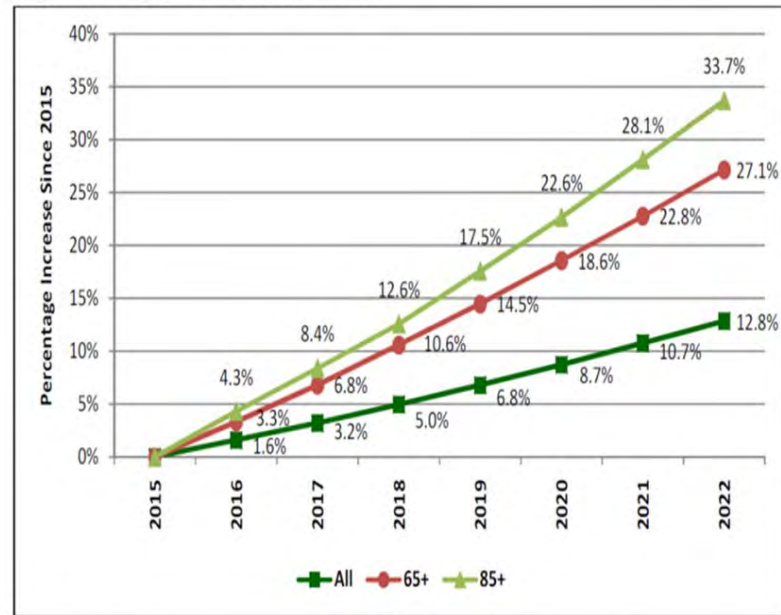
Source: CSO, Population and Labour Force Projections



# Meeting the needs of an Ageing Population



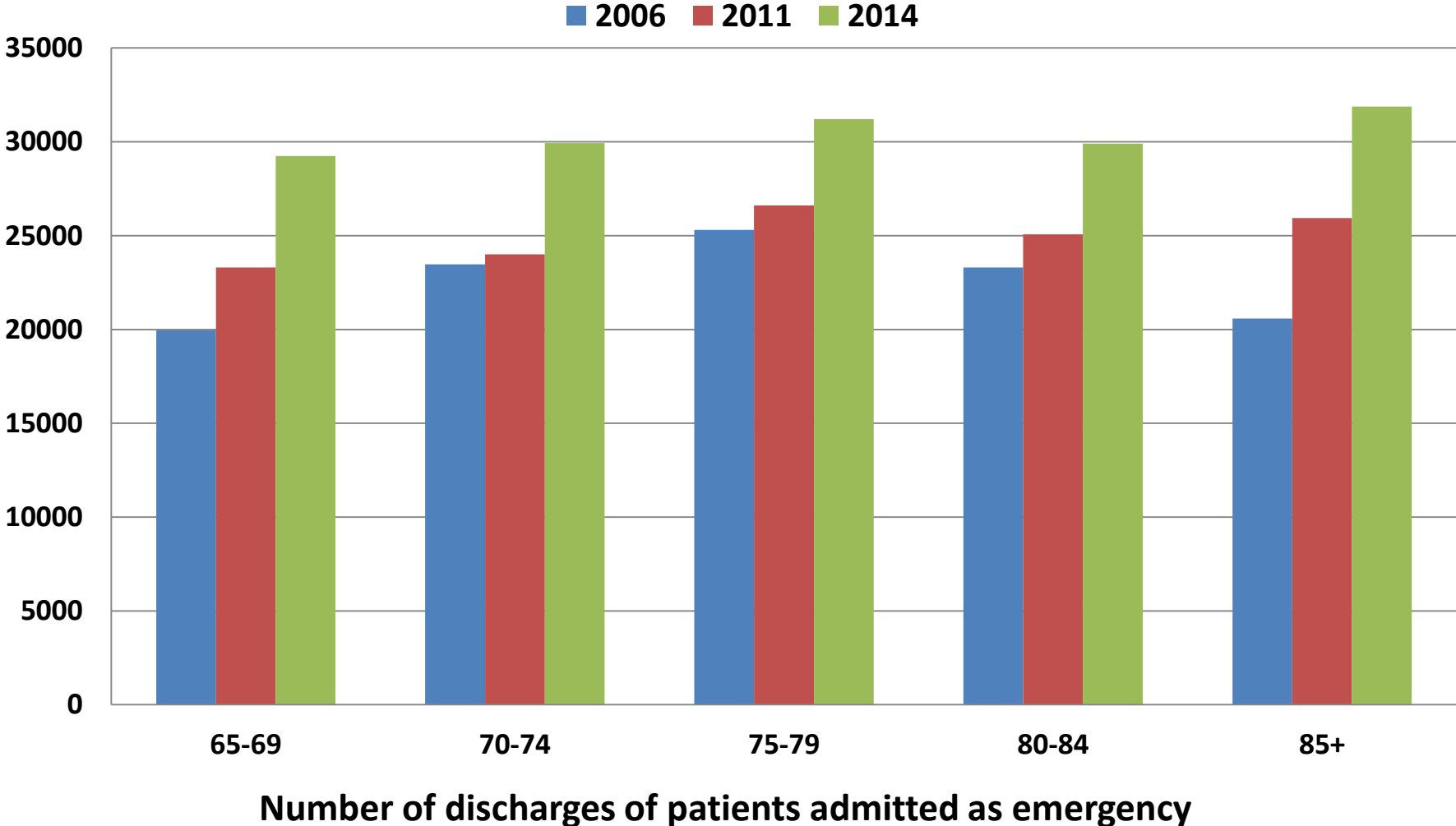
Figure 4.8: Projected percentage increases in in-patient cost pressures based on demographic projections: all ages, 65+ and 85+, 2015 to 2022



Source: HPO, CSO



# Increasing Number of Older People Requiring Emergency Admission



Source: Shelley/HIPE

# Decisive Shift to Primary Care



# Public Service Pay



Staff  
Our Most  
Valuable  
Resource



# Capital Funding



# Funding the Cost of Transformation



## DSRIP

Delivery System Reform Incentive Payment Program

Reducing Avoidable Hospital Use  
Through Delivery Reform



**\$8.5bn (over 5 years)**  
to cut costs by **\$17bn**



Health Foundation & Kings Fund (2015)  
The NHS Transformation Fund requires £1.5–  
£2.1 billion a year in dedicated funding  
between now and 2020/21 (i.e. more than  
£8bn pledged by 2020)

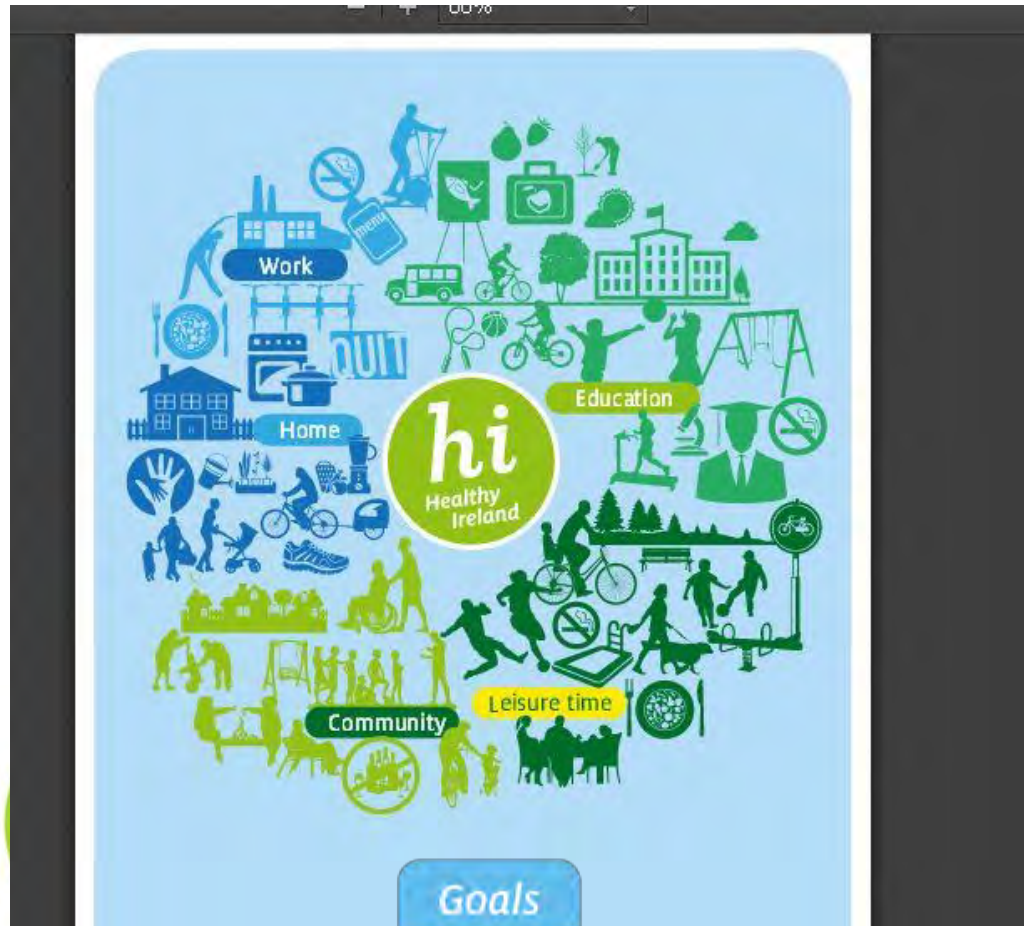
# Democratising Healthcare

through e-Health and Patient/Service User Involvement





# The Health & Wellbeing Agenda



*Increase the proportion of people who are healthy at all stages of life*

*Reduce health inequalities*

*Protect the public from threats to health and wellbeing*

*Create an environment where every individual and sector of society can play their part in achieving a healthy Ireland*





Feidhmeannacht na Seirbhíse Sláinte  
Health Service Executive

Thank you

Q&A

Building a Better Health Service

 @dghealthservice

CARE COMPASSION TRUST LEARNING